



Office of General Services

DESIGN & CONSTRUCTION GROUP
THE GOVERNOR NELSON A. ROCKEFELLER
EMPIRE STATE PLAZA
ALBANY, NY 12242

ADDENDUM NO. 2 TO PROJECT NO. 47626

ELECTRICAL WORK
INSTALL FLEET EV CHARGING SYSTEM
NEW PALTZ REGIONAL OFFICE
21 SOUTH PUTT CORNERS ROAD
NEW PALTZ, NY

April 24, 2026

NOTE: This Addendum forms a part of the Contract Documents. Insert it in the Project Manual. Acknowledge receipt of this Addendum in the space provided on the Bid Form.

DRAWINGS

1. Revised Drawings:
 - a. Drawings Nos. E-601 and E-603 noted Addendum 2 dated 4/23/26, accompany this Addendum and supersedes the same numbered previously issued drawings.

END OF ADDENDUM

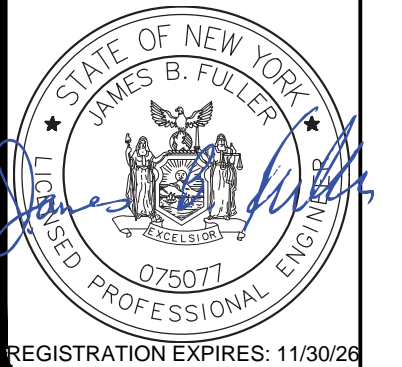
Brady M. Sherlock, P.E.
Director, Division of Design
Design & Construction



UNIFORM CODE STATEMENT:
TO THE BEST OF THE REGISTERED DESIGN PROFESSIONAL'S KNOWLEDGE, BELIEF, AND PROFESSIONAL JUDGMENT, THESE PLANS AND/OR SPECIFICATIONS ARE IN COMPLIANCE WITH THE 2020 UNIFORM CODE.

ENERGY CODE COMPLIANCE STATEMENT:
TO THE BEST OF THE REGISTERED DESIGN PROFESSIONAL'S KNOWLEDGE, BELIEF, AND PROFESSIONAL JUDGMENT, THESE PLANS AND/OR SPECIFICATIONS ARE IN COMPLIANCE WITH THE 2020 ENERGY CODE.

WARNING:
THE ALTERATION OF THIS MATERIAL IN ANY WAY, UNLESS DONE UNDER THE DIRECTION OF A COMPARABLE PROFESSIONAL, I.E. ARCHITECT FOR AN ARCHITECT, ENGINEER FOR AN ENGINEER OR LANDSCAPE ARCHITECT FOR A LANDSCAPE ARCHITECT, IS A VIOLATION OF THE NEW YORK STATE EDUCATION LAW AND/OR REGULATIONS AND IS A CLASS "A" MISDEMEANOR.

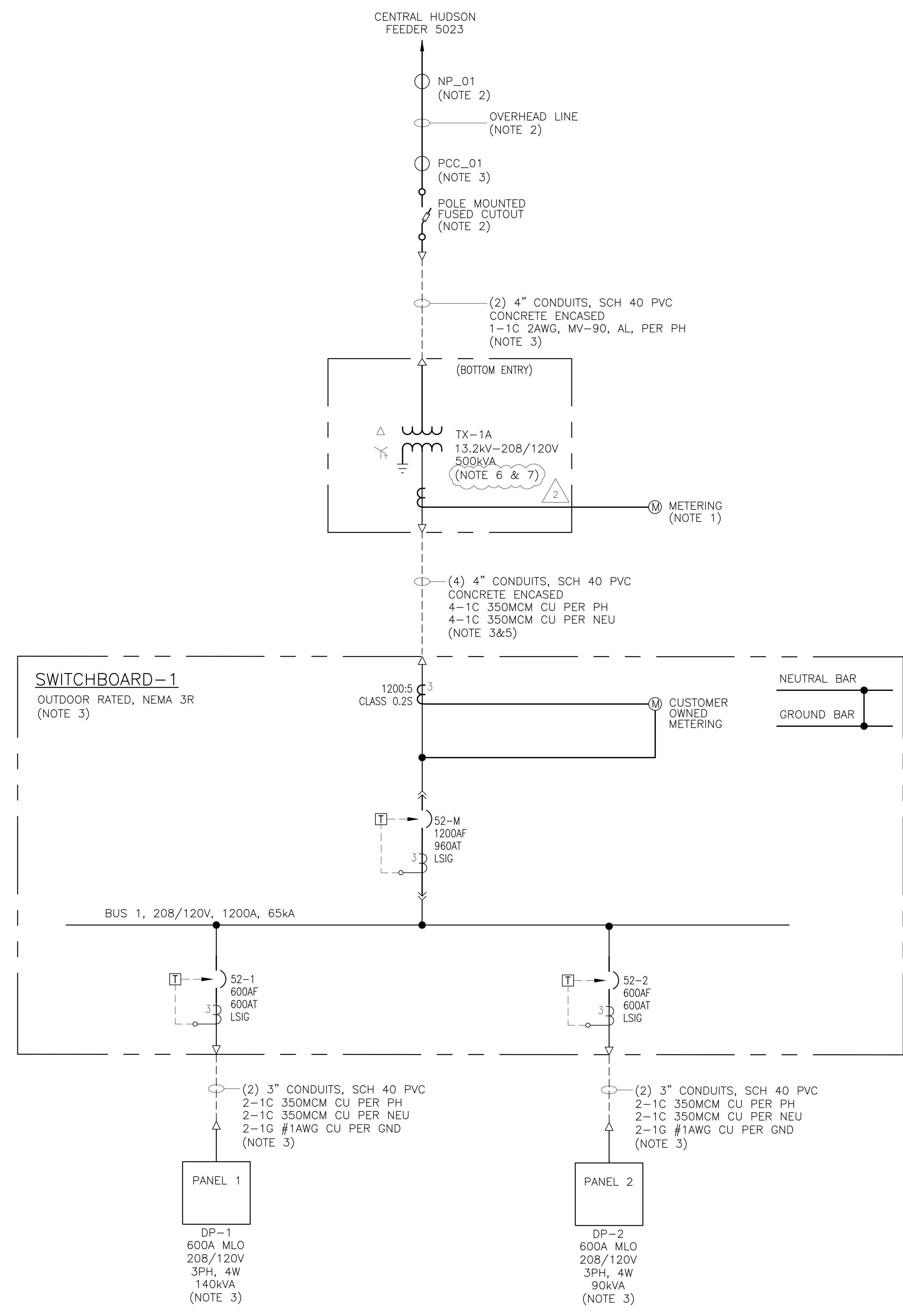


CONTRACT: **ELECTRICAL**
TITLE: NYS DEC OFFICE
EV INFRASTRUCTURE UPGRADES
LOCATION: NEW PALTZ DEC OFFICE
21 S PUTT CORNERS RD,
NEW PALTZ, NY 12561
CLIENT: DEPARTMENT OF
ENVIRONMENTAL CONSERVATION

MARK	DATE	DESCRIPTION
2	04/23/2026	ADDENDUM 2
0	01/23/2026	FOR BID
PROJECT NUMBER:		47626-E
DESIGNED BY:		S.H
DRAWN BY:		B.W
FIELD CHECK:		
APPROVED:		S.K
SHEET TITLE: ONE LINE DIAGRAM		
DRAWING NUMBER: E-601		
SHEET 16 OF 21		

NOTES

- METER SOCKET, MOUNTING ASSEMBLY, AND CONDUIT TO BE SUPPLIED AND INSTALLED BY THE CONTRACTOR. METER AND METERING INSTRUMENTATION TO BE SUPPLIED AND INSTALLED BY THE UTILITY (CHG&E). REFER TO EQUIPMENT LIST FOR APPROVED METER SOCKET.
- TO BE SUPPLIED AND INSTALLED BY THE UTILITY (CHG&E).
- TO BE SUPPLIED AND INSTALLED BY THE CONTRACTOR.
- EV CHARGERS ARE TO BE SUPPLIED AND INSTALLED BY OTHERS. CONTRACTOR SHALL COORDINATE WITH DIRECTOR'S REPRESENTATIVE TO SUPPORT INSTALLATION.
- A MINIMUM OF TEN FEET OF SLACK CABLE SHALL BE LEFT AT THE TRANSFORMER FOR THE UTILITY INSTALLATION.
- TRANSFORMER VAULT TO BE SUPPLIED AND INSTALLED BY CONTRACTOR. TRANSFORMER TO BE SUPPLIED AND INSTALLED BY UTILITY.
- PRIMARY AND SECONDARY CABLE TERMINATIONS TO BE MADE BY UTILITY DURING TRANSFORMER INSTALLATION.



CONSULTANT
CERTIFICATION OF AUTHORIZATION #: 018342



UNIFORM CODE STATEMENT:
TO THE BEST OF THE REGISTERED DESIGN PROFESSIONAL'S KNOWLEDGE, BELIEF, AND PROFESSIONAL JUDGMENT, THESE PLANS AND/OR SPECIFICATIONS ARE IN COMPLIANCE WITH THE 2020 UNIFORM CODE.

ENERGY CODE COMPLIANCE STATEMENT:
TO THE BEST OF THE REGISTERED DESIGN PROFESSIONAL'S KNOWLEDGE, BELIEF, AND PROFESSIONAL JUDGMENT, THESE PLANS AND/OR SPECIFICATIONS ARE IN COMPLIANCE WITH THE 2020 ENERGY CODE.

WARNING:
THE ALTERATION OF THIS MATERIAL IN ANY WAY, UNLESS DONE UNDER THE DIRECTION OF A COMPARABLE PROFESSIONAL, I.E. ARCHITECT FOR AN ARCHITECT, ENGINEER FOR AN ENGINEER OR LANDSCAPE ARCHITECT FOR A LANDSCAPE ARCHITECT, IS A VIOLATION OF THE NEW YORK STATE EDUCATION LAW AND/OR REGULATIONS AND IS A CLASS "A" MISDEMEANOR.



REGISTRATION EXPIRES: 11/30/26

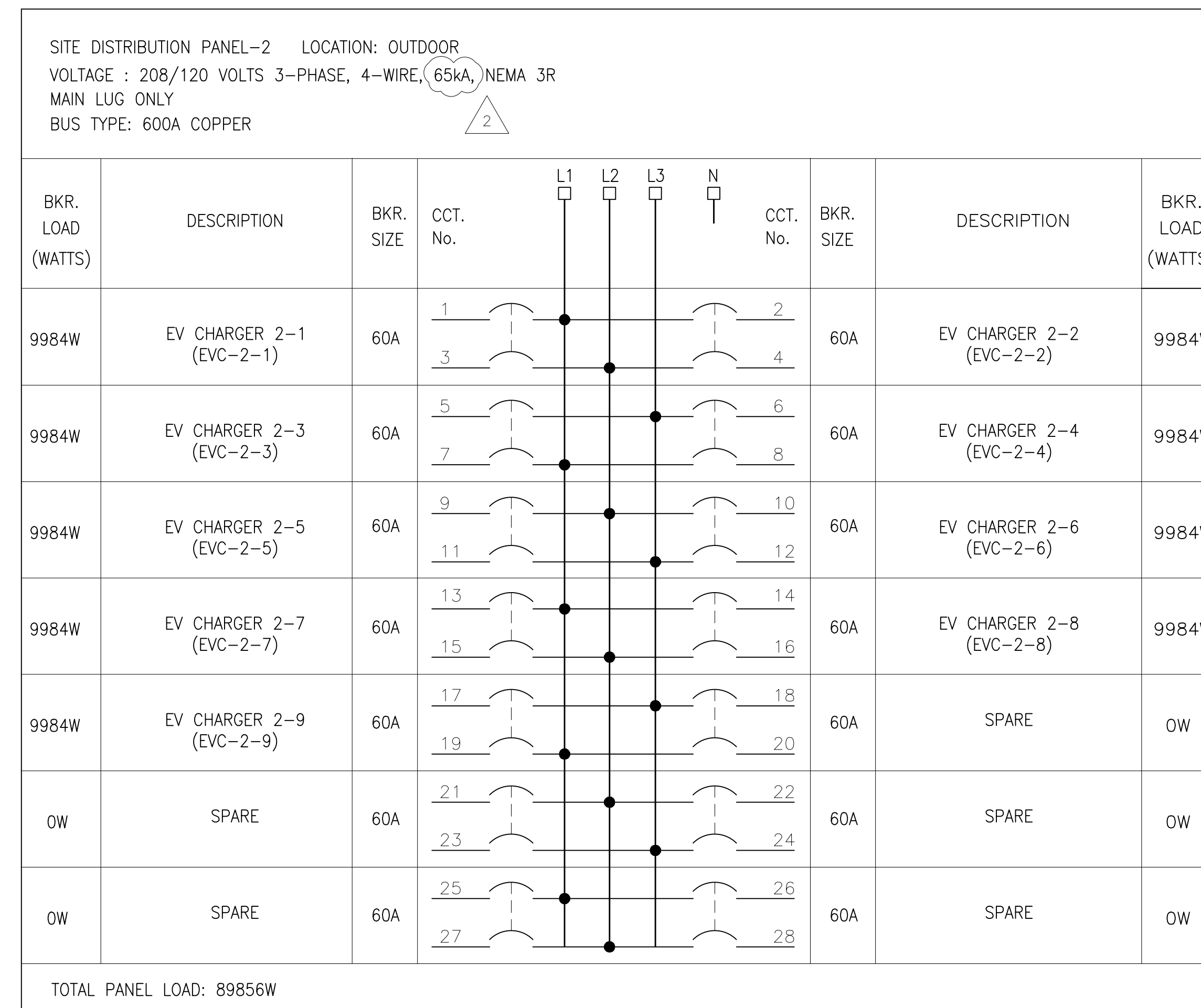
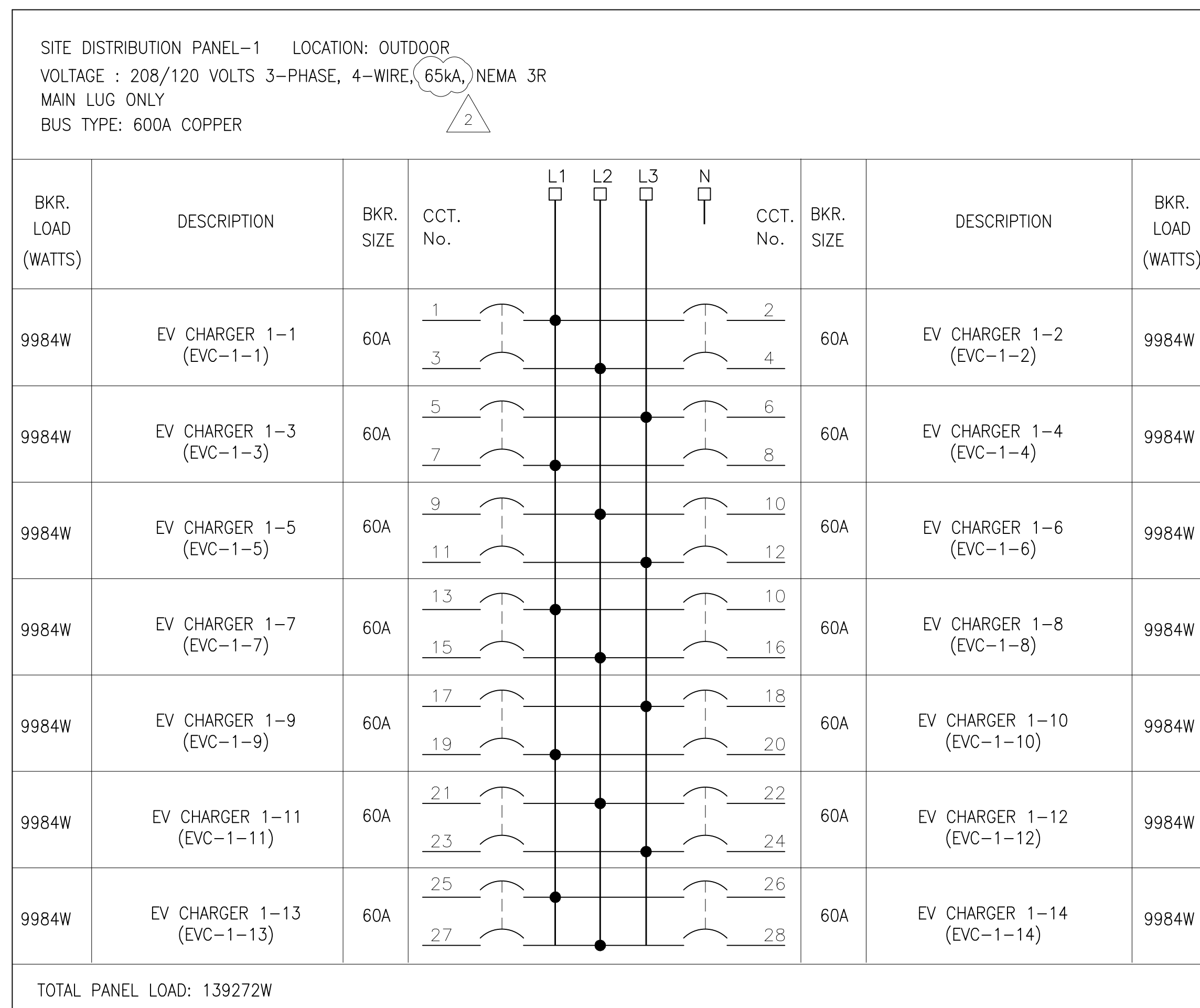
CONTRACT: ELECTRICAL

TITLE: NYS DEC OFFICE
EV INFRASTRUCTURE UPGRADES

LOCATION: NEW PALTZ DEC OFFICE
21 S PUTT CORNERS RD,
NEW PALTZ, NY 12561

CLIENT: DEPARTMENT OF
ENVIRONMENTAL CONSERVATION

2	04/23/2026	ADDENDUM 2
0	01/23/2026	FOR BID
MARK	DATE	DESCRIPTION
PROJECT NUMBER:	47626-E	
DESIGNED BY:	S.H	
DRAWN BY:	B.W	
FIELD CHECK:		
APPROVED:	S.K	
SHEET TITLE:		
PANEL, CABLE & CONDUIT SCHEDULES		
DRAWING NUMBER:		
E-603		
SHEET 18 OF 21		



CABLE LIST

TYPE	VOLTAGE	CATEGORY	CONDUCTORS	METAL	RATING
1	15kV	POWER	SINGLE	ALUMINUM	XLPE, MV 90, 100%
2	600V	POWER	SINGLE	COPPER	XHHW-90 OR THWN-90

CABLE SCHEDULE

CABLE NUMBER	CONDUCTORS	SIZE	GND WIRE	TYPE	ESTIMATED LENGTH (FT)	VOLTAGE DROP	EQUIPMENT FROM	EQUIPMENT TO	CABLE ROUTING
PCC_01-TX_1A	3	2AWG	N/A	1	120	0%	POLE PCC_01	TRANSFORMER TX-1A	UNDERGROUND CONDUIT
TX_1A-52_M	16	350MCM	N/A	2	30	0.2%	TRANSFORMER TX-1A	SWITCHBOARD-1	UNDERGROUND CONDUIT
52_1-DP1	8	350MCM	1 AWG	2	50	0.41%	SWITCHBOARD-1	DISTRIBUTION PANEL 1	UNDERGROUND CONDUIT
52_2-DP2	8	350MCM	1 AWG	2	30	0.16%	SWITCHBOARD-1	DISTRIBUTION PANEL 2	UNDERGROUND CONDUIT
DP1-EVC1	2	4AWG	10 AWG	2	125	1.7%	DISTRIBUTION PANEL 1	EVC1-N	UNDERGROUND CONDUIT
DP2-EVC2	2	4AWG	10 AWG	2	75	1.0%	DISTRIBUTION PANEL 2	EVC2-N	UNDERGROUND CONDUIT

*VOLTAGE DROP CALCULATIONS BASED ON ESTIMATED CABLE LENGTH AND STANDARD CABLE BRAND.
*EV CHARGER BRANCH CIRCUITS ARE TYPICAL. MAXIMUM BRANCH CIRCUIT LENGTH USED FOR VOLTAGE DROP CALCULATION.

CONDUIT SCHEDULE

CONDUIT NUMBER	CONDUIT SIZE	EQUIPMENT FROM	EQUIPMENT TO
A1	4"	POLE PCC_01	TRANSFORMER TX-1A
B1 TO B4	4"	TRANSFORMER TX-1A	SWITCHBOARD-1
C1A	3"	SWITCHBOARD-1	DISTRIBUTION PANEL 1
C1B	3"	SWITCHBOARD-1	DISTRIBUTION PANEL 1
C2A	3"	SWITCHBOARD-1	DISTRIBUTION PANEL 2
C2B	3"	SWITCHBOARD-1	DISTRIBUTION PANEL 2
D1	1.5"	DISTRIBUTION PANEL 1	EVC-1-1 & EVC-1-2
D2	1.5"	DISTRIBUTION PANEL 1	EVC-1-3 & EVC-1-4
D3	1.5"	DISTRIBUTION PANEL 1	EVC-1-5 & EVC-1-6
D4	1.5"	DISTRIBUTION PANEL 1	EVC-1-7 & EVC-1-8
D5	1.5"	DISTRIBUTION PANEL 1	EVC-1-9 & EVC-1-10
D6	1.5"	DISTRIBUTION PANEL 1	EVC-1-11 & EVC-1-12
D7	1.5"	DISTRIBUTION PANEL 1	EVC-1-13 & EVC-1-14
E1	1.5"	DISTRIBUTION PANEL 2	EVC-2-1 & EVC-2-2
E2	1.5"	DISTRIBUTION PANEL 2	EVC-2-3 & EVC-2-4
E3	1.5"	DISTRIBUTION PANEL 2	EVC-2-5 & EVC-2-6
E4	1.5"	DISTRIBUTION PANEL 2	EVC-2-7 & EVC-2-8
E5	1.5"	DISTRIBUTION PANEL 2	EVC-2-9